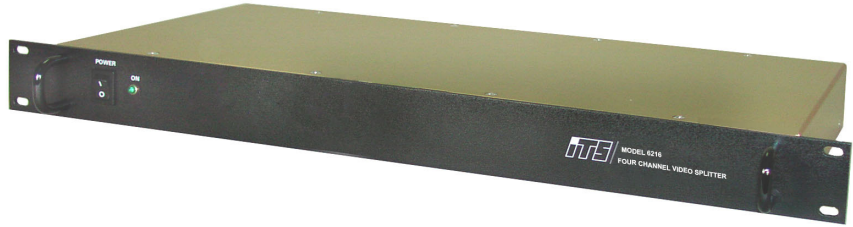


FEATURES

- *Converts up to four input video signal into a single video output.*
- *Accepts RS-170, RS-170A and NTSC video.*
- *Accepts mixed format video inputs. Video signals do not have to be synchronized.*
- *Full control of unit via RS-232 port.*
- *Windows based GUI is included.*



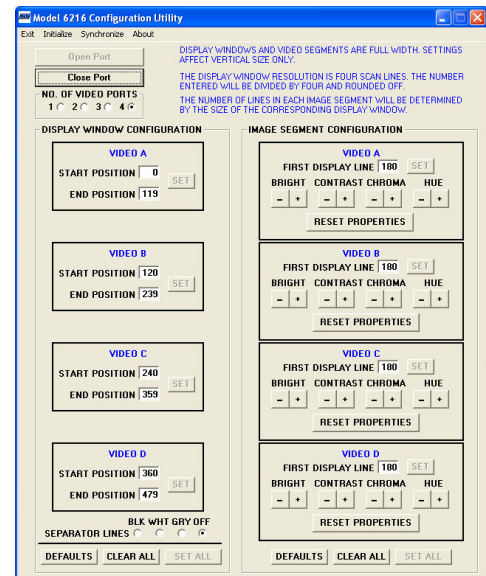
DESCRIPTION

The 6216 operates with input video signals that comply with RS-170, RS-170A or NTSC. The four inputs may be a mix of these formats and do not have to be synchronized. The display is formatted by the user via the RS-232 port to provide up to four horizontal stripes. The stripe configuration is suited to applications where the main point of interest is the horizontal location of an event, such as weapon scoring systems. The individual displayed windows are formed by selecting a start line number and a stop line number for each of the four input video signals (A, B, C and D). This allows the user to set each window to any size desired and to place them in any order. The window size values are selected in increments of FOUR scan lines (i.e a number between 0 and 120 for NTSC video).

The user then sets the values that determine what portion of the input video is displayed in its corresponding window. Values are entered that determine the amount of cropping from both the top and bottom of each input video. These values are set in one scan line increments. The first value sets the number of scan lines before the image starts displaying within the defined window. The second value is the number of scan lines the video is active. If the programmed window size is larger than the size of the assigned video segment, the unused portion will be black. If there is no applied video to an input that is programmed to be displayed in a window, the segment will be blue.

If desired, the user may insert a line between the programmed windows. This line is two scan lines wide and the color may be set to Black (0%), gray 25%, gray 75%, white (100%) or disabled. The operator may also adjust the brightness, contrast, chroma and hue of each input video if desired.

The included GUI provides full control of the 6216 or the user may write their own control software if the application requires embedding the 6216 in a system configuration.



MODEL 6216 FOUR CHANNEL VIDEO SPLITTER

SPECIFICATIONS

Video Inputs	Composite, 525/60 interlaced, 2:1 black negative, one volt peak-to peak, in accordance with EIA RS-170 or RS-170A (NTSC). connector is BNC.
Input Impedance	75 ohms.
Video B Output	Standard 525/60 composite video 2:1 interlace, black negative per EIA RS-170 or NTSC. 1.0 volt peak-to-peak when terminated by 75 ohms.
RS-232C	EIA RS232C, 9600 Baud, 8 bit, no parity, 1 stop bit. No handshake
Temperature	
Operating:	0°C to +60°C
Non-operating:	-20 to +70
Humidity	95% non-condensing
Package	19 inch rack mountable aluminum enclosure, 1.72 inch high by 9.00 inch deep (including connectors).
Weight:	4.5 lbs.
Power	100 to 240VAC, 50/60 Hz, 3 watts

